




TRICORBRAUN
the power of options

PRINT CARD

INKS		Black	LINE SCREEN	??		LINE SCREEN
		Blue	LINE SCREEN	??		LINE SCREEN
		Green	LINE SCREEN	??		LINE SCREEN
			LINE SCREEN			LINE SCREEN

Date: 03/20/2019	Customer:	Board Test:	Comments:
CAD #:	Ident: Orthene 12570	Plate: .125"	
Press:	Cylinder:	Size:	Ver. 1 Rev. 0
		Undercut: .280"	

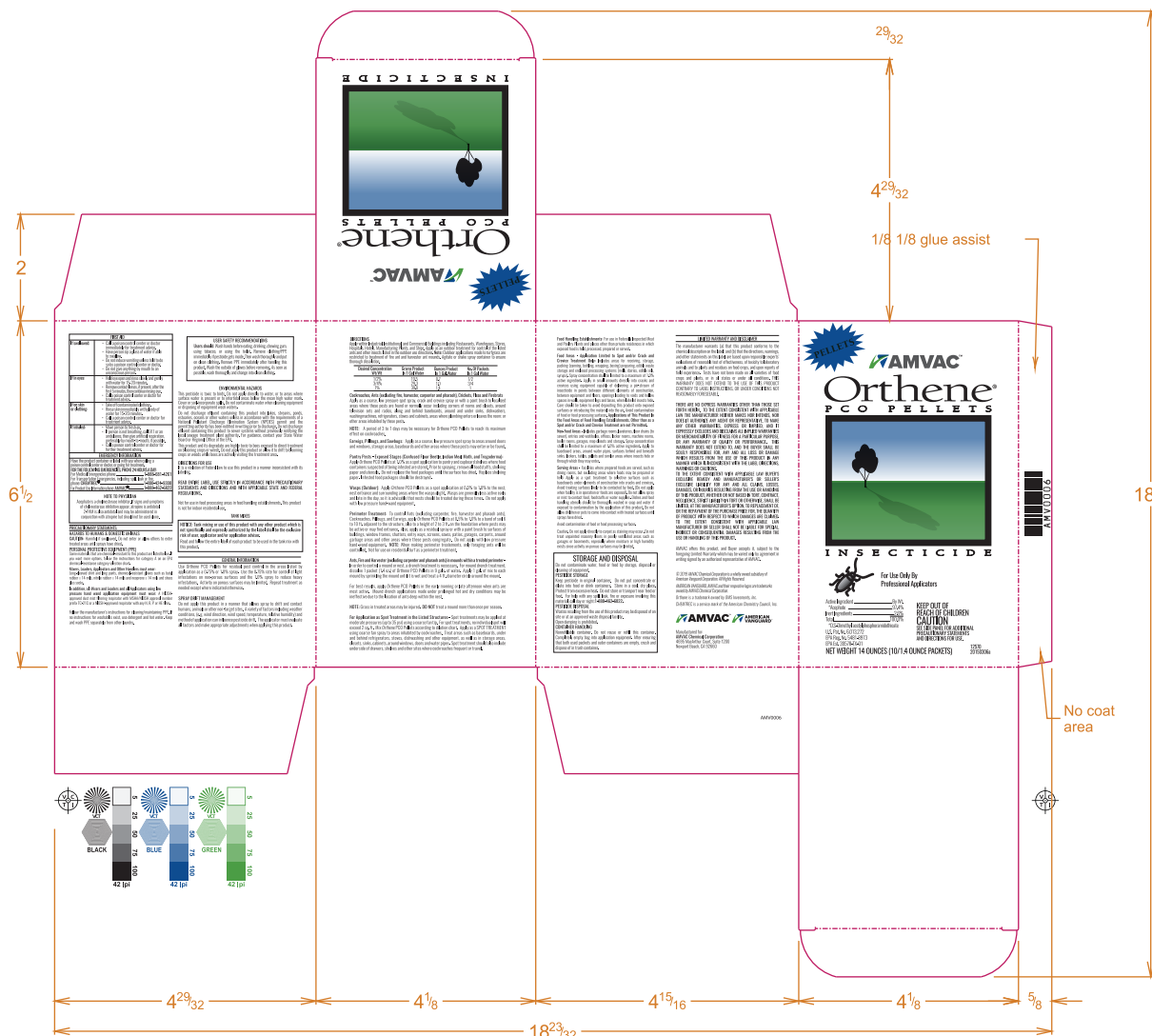
DOC ID 561378

ACCEPTED
VIA NOTIFICATION
LABEL NOT REVIEWED

April 24, 2019

New York State Department
of Environmental Conservation
Division of Materials Management
Pesticide Product Registration

Classified for
"RESTRICTED USE"
in New York State
under 6NYCRR Part 326



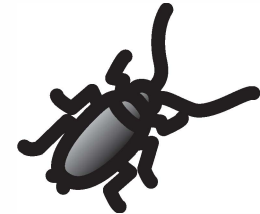
FIRST AID	
If swallowed:	<ul style="list-style-type: none"> Call a poison control center or doctor immediately for treatment advice. Have person sip a glass of water if able to swallow. Do not induce vomiting unless told to do so by a poison control center or doctor. Do not give anything by mouth to an unconscious person.
If in eyes:	<ul style="list-style-type: none"> Hold eye open and rinse slowly and gently with water for 15-20 minutes. Remove contact lenses, if present, after the first 5 minutes, then continue rinsing eye. Call a poison control center or doctor for treatment advice.
If on skin or clothing:	<ul style="list-style-type: none"> Take off contaminated clothing. Rinse skin immediately with plenty of water for 15-20 minutes. Call a poison control center or doctor for treatment advice.
If inhaled:	<ul style="list-style-type: none"> Move person to fresh air. If person is not breathing, call 911 or an ambulance, then give artificial respiration, preferably by mouth-to-mouth, if possible. Call a poison control center or doctor for further treatment advice.
EMERGENCY INFORMATION	
Have the product container or label with you when calling a poison control center or doctor, or going for treatment. FOR THE FOLLOWING EMERGENCIES, PHONE 24 HOURS A DAY: For Medical Emergencies phone: 1-888-681-4261 For Transportation Emergencies, including spill, leak or fire, phone: CHEMTREC® 1-800-424-9300 For Product Use Information phone: AMVAC® 1-888-462-6822	
NOTE TO PHYSICIAN	
Acephate is a cholinesterase inhibitor. If signs and symptoms of cholinesterase inhibition appear, atropine is antidotal. 2-PAM is also antidotal and may be administered in conjunction with atropine but should not be used alone.	

PRECAUTIONARY STATEMENTS
HAZARDS TO HUMANS & DOMESTIC ANIMALS
CAUTION: Harmful if swallowed. Do not enter or allow others to enter treated areas until sprays have dried.
PERSONAL PROTECTIVE EQUIPMENT (PPE)
 Some materials that are chemical-resistant to this product are listed below. If you want more options, follow the instructions for category A on an EPA chemical-resistance category selection chart.

Mixers, Loaders, Applicators and Other Handlers must wear:
 Long-sleeved shirt and long pants, chemical-resistant gloves such as butyl rubber ≥ 14 mils, nitrile rubber ≥ 14 mils and neoprene ≥ 14 mils and shoes plus socks.

In addition, all Mixers and Loaders and all Applicators using low pressure hand wand application equipment must wear: A NIOSH-approved dust mist filtering respirator with MSHA/NIOSH approval number prefix TC-21C or a NIOSH-approved respirator with any N, R, P or HE filter.

Follow the manufacturer's instructions for cleaning/maintaining PPE. If no instructions for washables exist, use detergent and hot water. Keep and wash PPE separately from other laundry.



For Use Only By
Professional Applicators

Active IngredientBy Wt.
 *Acephate97.4%
 Inert Ingredients2.6%
 Total100.0%
 *O,S-Dimethyl acetylphosphoramidothioate
 U.S. Pat. No. 6,013,272
 EPA Reg. No. 5481-8973
 EPA Est. 39578-TX-01
NET WEIGHT 14 OUNCES (10/1.4 OUNCE PACKETS)

USER SAFETY RECOMMENDATIONS
<p>Users should: Wash hands before eating, drinking, chewing gum, using tobacco, or using the toilet. Remove clothing/PPE immediately if pesticide gets inside. Then wash thoroughly and put on clean clothing. Remove PPE immediately after handling this product. Wash the outside of gloves before removing. As soon as possible, wash thoroughly and change into clean clothing.</p>

ENVIRONMENTAL HAZARDS

This pesticide is toxic to birds. Do not apply directly to water, or to areas where surface water is present or to intertidal areas below the mean high water mark. Cover or soil-incorporate spills. Do not contaminate water when cleaning equipment or disposing of equipment wash waters.

Do not discharge effluent containing this product into lakes, streams, ponds, estuaries, oceans or other waters unless in accordance with the requirements of a National Pollutant Discharge Elimination System (NPDES) permit and the permitting authority has been notified in writing prior to discharge. Do not discharge effluent containing this product to sewer systems without previously notifying the local sewerage treatment plant authority. For guidance, contact your State Water Board or Regional Office of the EPA.

This product and its degrade are highly toxic to bees exposed to direct treatment on blooming crops or weeds. Do not apply this product or allow it to drift to blooming crops or weeds while bees are actively visiting the treatment area.

DIRECTIONS FOR USE
 It is a violation of Federal law to use this product in a manner inconsistent with its labeling.

READ ENTIRE LABEL USE STRICTLY IN ACCORDANCE WITH PRECAUTIONARY STATEMENTS AND DIRECTIONS AND WITH APPLICABLE STATE AND FEDERAL REGULATIONS.

Not for use in feed processing areas in feed handling establishments. This product is not for indoor residential use.

TANK MIXES

NOTICE: Tank mixing or use of this product with any other product which is not specifically and expressly authorized by the label shall be the exclusive risk of user, applicator and/or application advisor.

Read and follow the entire label of each product to be used in the tank mix with this product.

GENERAL INFORMATION

Use *Orthene* PCO Pellets for residual pest control in the areas listed by application as a 0.75% or 1.0% spray. Use the 0.75% rate for control of light infestations on non-porous surfaces and the 1.0% spray to reduce heavy infestations. Activity on porous surfaces may be limited. Repeat treatment as needed except where indicated otherwise.

SPRAY DRIFT MANAGEMENT

Do not apply this product in a manner that allows spray to drift and contact humans, animals or other non-target sites. A variety of factors including weather conditions, (e.g., wind direction, wind speed, temperature, relative humidity) and method of application can influence pesticide drift. The applicator must evaluate all factors and make appropriate adjustments when applying this product.

DIRECTIONS

Apply within Industrial, Institutional, and Commercial Buildings including Restaurants, Warehouses, Stores, Hospitals, Hotels, Manufacturing Plants, and Ships. Apply as an outdoor treatment for control of the listed ants and other insects listed in the outdoor use directions. **Note:** Outdoor applications made to turfgrass are restricted to treatment of fire ant and harvester ant mounds. Agitate or shake spray container to ensure thorough dissolution.

Desired Concentration Wt/Wt	Grams Product In 1 Gal.Water	Ounces Product In 1 Gal.Water	No. Of Packets In 1 Gal.Water
1/2%	19.5	0.7	1/2
3/4%	29.3	1.0	3/4
1%	39.0	1.4	1

Cockroaches, Ants (excluding fire, harvester, carpenter and pharaoh), Crickets, Fleas and Firebrats
 Apply as a coarse, low pressure spot spray, crack and crevice spray or with a paint brush to localized areas where these pests are found or normally occur including corners of rooms and closets, around television sets and radios, along and behind baseboards, around and under sinks, dishwashers, washingmachines, refrigerators, stoves and cabinets, areas where plumbing enters or leaves the room: or other areas inhabited by these pests.

NOTE: A period of 3 to 7 days may be necessary for *Orthene* PCO Pellets to reach its maximum effect on cockroaches.

Earwigs, Pillbugs, and Sowbugs: Apply as a coarse, low pressure spot spray to areas around doors and windows, storage areas, baseboards and other areas where these pests may enter or be found.

Pantry Pests - Exposed Stages (Confused Flour Beetle, Indian Meal Moth, and Trogoderma): Apply *Orthene* PCO Pellets at 1.0% as a spot application to pantry and cupboard shelves where food containers suspected of being infested are stored. Prior to spraying, remove all foodstuffs, shelving paper and utensils. Do not replace the food packages until the surface has dried. Replace shelving paper. Infested food packages should be destroyed.

Wasps (Outdoor): Apply *Orthene* PCO Pellets as a spot application at 0.5% to 1.0% to the nest, nest entrance and surrounding areas where the wasps alight. Wasps are generally less active early and late in the day, so it is advisable that nests should be treated during these times. Do not apply with low pressure hand-wand equipment.

Perimeter Treatment: To control Ants (excluding carpenter, fire, harvester and pharaoh ants), Cockroaches, Pillbugs, and Earwigs, apply *Orthene* PCO Pellets at 0.5% to 1.0% to a band of soil 6 to 10 ft. adjacent to the structure, also to a height of 2 to 3 ft. on the foundation where pests may be active or may find entrance. Also, apply as a residual spray or with a paint brush to surfaces of buildings, window frames, shutters, entry ways, screens, eaves, patios, garages, carports, around garbage areas and other areas where these pests congregate. Do not apply with low pressure hand-wand equipment. **NOTE:** When making perimeter treatments, only foraging ants will be controlled. Not for use on residential turf as a perimeter treatment.

Ants, Fire and Harvester (excluding carpenter and pharaoh ants) in mounds within a treated perimeter - In order to control a mound or nest, a drench treatment is necessary. For mound drench treatment, dissolve 1 packet (1.4 oz.) of *Orthene* PCO Pellets in 9 gals. of water. Apply 1 gal. of mix to each mound by sprinkling the mound until it is wet and treat a 4 ft. diameter circle around the mound.

For best results, apply *Orthene* PCO Pellets in the early morning or late afternoon when ants are most active. Mound drench applications made under prolonged hot and dry conditions may be ineffective due to the location of ants deep within the nest.

NOTE: Grass in treated areas may be injured. **DO NOT** treat a mound more than once per season.

For Application as Spot Treatment in the Listed Structures - Spot treatments may be applied at moderate pressures (up to 35 psi) using a coarse fan tip. For spot treatments, no individual spot will exceed 2 sq. ft. Mix *Orthene* PCO Pellets according to dilution chart. Apply as a SPOT TREATMENT using coarse fan spray to areas inhabited by cockroaches. Treat areas such as baseboards, under and behind refrigerators, stoves, dishwashing and other equipment, as well as in storage areas, closets, sinks, cabinets, around windows, doors and water pipes. Spot treatment should also include underside of drawers, shelves and other sites where cockroaches frequent or travel.

Food Handling Establishments: For use in Federally Inspected Meat and Poultry Plants and places other than private residences in which exposed foods held, processed, prepared or served.

Food Areas - Application Limited to Spot and/or Crack and Crevice Treatment Only: Includes areas for receiving, storage, packing (canning, bottling, wrapping, boxing) preparing, edible waste storage and enclosed processing systems (mills, dairies, edible oils, syrups). Spray concentration shall be limited to a maximum of 1.0% active ingredient. Apply in small amounts directly into cracks and crevices using equipment capable of delivering a pin-stream of insecticide in points between different elements of construction, between equipment and floors, openings leading to voids and hollow spaces in walls, equipment legs and bases, where labeled insects hide. Care should be taken to avoid depositing this product onto exposed surfaces or introducing the material into the air. Avoid contamination of food or food processing surfaces. **Applications of This Product In the Food Areas of Food Handling Establishments, Other than as a Spot and/or Crack and Crevice Treatment are Not Permitted.**

Non-Food Areas - Includes garbage rooms, lavatories, floor drains (to sewer), entries and vestibules, offices, locker rooms, machine rooms, boiler rooms, garages, mop closets and storage. Spray concentration shall be limited to a maximum of 1.0% active ingredient. Apply to baseboard areas, around water pipes, surfaces behind and beneath sinks, lockers, tables, pallets and similar areas where insects hide or through which they may enter.

Serving Areas - Facilities where prepared foods are served, such as dining rooms, but excluding areas where foods may be prepared or held: Apply as a spot treatment to selective surfaces such as baseboards under elements of construction in cracks and crevices. Avoid treating surfaces likely to be contacted by food. (Do not apply when facility is in operation or food are exposed). Do not allow spray or mist to contact food, foodstuffs or water supplies. Dishes and food handling utensils should be thoroughly washed in soap and water if exposed to contamination by the application of this product. Do not allow children or pets to come into contact with treated surfaces until spray has dried.

Avoid contamination of food or food processing surfaces.

Caution. Do not apply directly to carpet as staining may occur. Do not treat unpainted masonry floors in poorly ventilated areas such as garages or basements, especially where moisture or high humidity exists since activity on porous surfaces may be limited.

STORAGE AND DISPOSAL

Do not contaminate water, food or feed by storage, disposal or cleaning of equipment.

PESTICIDE STORAGE
 Keep pesticide in original container. Do not put concentrate or dilute into food or drink containers. Store in a cool, dry place. Protect from excessive heat. Do not store or transport near feed or food. For help with any spill, leak, fire or exposure involving this material, call day or night: 1-888-462-6822.

PESTICIDE DISPOSAL
 Wastes resulting from the use of this product may be disposed of on site or at an approved waste disposal facility.

Open dumping is prohibited.

CONTAINER HANDLING
 Nonrefillable container. Do not reuse or refill this container. Completely empty bag into application equipment. After ensuring that both used packets and outer containers are empty, crush and dispose of in trash container.

LIMITED WARRANTY AND DISCLAIMER

The manufacturer warrants (a) that this product conforms to the chemical description on the label and (b) that the directions, warnings, and other statements on this label are based upon responsible experts' evaluations of reasonable test of effectiveness, of toxicity to laboratory animals and to plants and residues on food crops, and upon reports of field experience. Tests have not been made on all varieties of food crops and plants, or in all states or under all conditions. THIS WARRANTY DOES NOT EXTEND TO THE USE OF THIS PRODUCT CONTRARY TO LABEL INSTRUCTIONS, OR UNDER CONDITIONS NOT REASONABLY FORESEEABLE.

THERE ARE NO EXPRESS WARRANTIES OTHER THAN THOSE SET FORTH HEREIN. TO THE EXTENT CONSISTENT WITH APPLICABLE LAW THE MANUFACTURER NEITHER MAKES NOR INTENDS, NOR DOES IT AUTHORIZE ANY AGENT OR REPRESENTATIVE, TO MAKE ANY OTHER WARRANTIES, EXPRESS OR IMPLIED, AND IT EXPRESSLY EXCLUDES AND DISCLAIMS ALL IMPLIED WARRANTIES OR MERCHANTABILITY OF FITNESS FOR A PARTICULAR PURPOSE, OR ANY WARRANTY OF QUALITY OR PERFORMANCE. THIS WARRANTY DOES NOT EXTEND TO, AND THE BUYER SHALL BE SOLELY RESPONSIBLE FOR, ANY AND ALL LOSS OR DAMAGE WHICH RESULTS FROM THE USE OF THIS PRODUCT IN ANY MANNER WHICH IS INCONSISTENT WITH THE LABEL DIRECTIONS, WARNINGS OR CAUTIONS.

TO THE EXTENT CONSISTENT WITH APPLICABLE LAW BUYER'S EXCLUSIVE REMEDY AND MANUFACTURER'S OR SELLER'S EXCLUSIVE LIABILITY FOR ANY AND ALL CLAIMS, LOSSES, DAMAGES, OR INJURIES RESULTING FROM THE USE OR HANDLING OF THIS PRODUCT, WHETHER OR NOT BASED IN TORT, CONTRACT, NEGLIGENCE, STRICT LIABILITY IN TORT OR OTHERWISE, SHALL BE LIMITED, AT THE MANUFACTURER'S OPTION, TO REPLACEMENT OF, OR THE REPAYMENT OF THE PURCHASE PRICE FOR, THE QUANTITY OF PRODUCT WITH RESPECT TO WHICH DAMAGES ARE CLAIMED. TO THE EXTENT CONSISTENT WITH APPLICABLE LAW MANUFACTURER OR SELLER SHALL NOT BE LIABLE FOR SPECIAL, INDIRECT OR CONSEQUENTIAL DAMAGES RESULTING FROM THE USE OR HANDLING OF THIS PRODUCT.

AMVAC offers this product, and Buyer accepts it, subject to the foregoing Limited Warranty which may be varied only by agreement in writing signed by an authorized representative of AMVAC.

© 2019 AMVAC Chemical Corporation is a wholly owned subsidiary of American Vanguard Corporation. All Rights Reserved.

AMERICAN VANGUARD, AMVAC and their respective logos are trademarks owned by AMVAC Chemical Corporation.

Orthene is a trademark owned by OMS Investments, Inc. CHEMTREC is a service mark of the American Chemistry Council, Inc.



Manufactured for:
 AMVAC Chemical Corporation
 4695 MacArthur Court, Suite 1200
 Newport Beach, CA 92660



AMV0006

